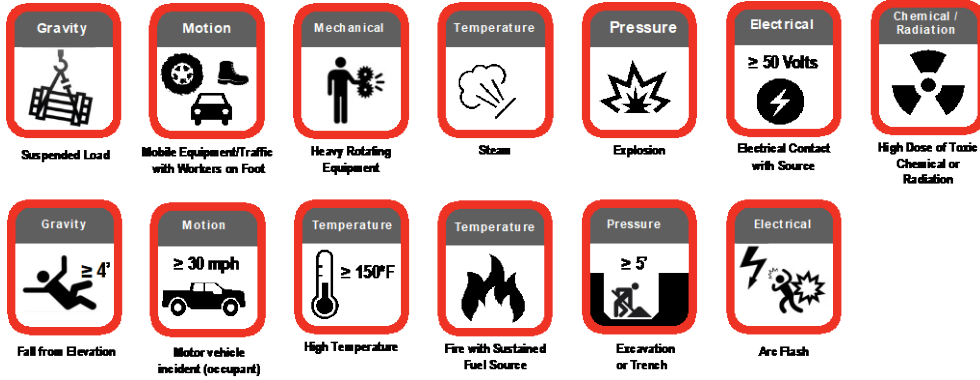
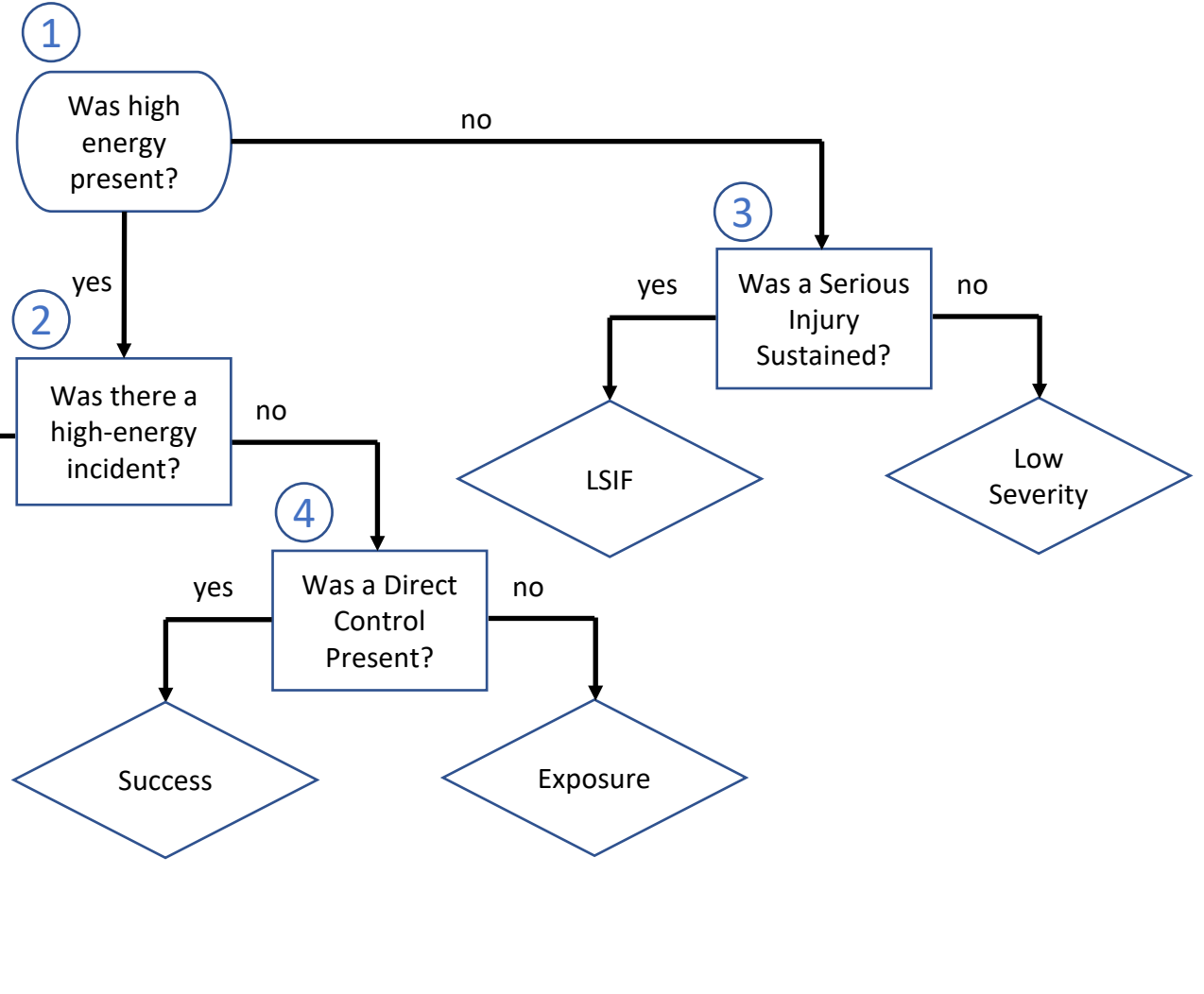


Safety Classification & Learning Model

1 Was High-Energy Present? Refer to icons below or energy assessment charts if there is no applicable icon



3 Was a Serious Injury Sustained? Refer to EEI SIF criteria for a complete categorization and description of SIF events.



2 Was there a High-Energy Incident? An instance where the high-energy source was released and where the worker came in contact with or proximity to the high-energy source.

- Released: An instance where energy source changes state while exposed to the environment
- Contact: An instance when high energy is transmitted to the human body
- Proximity: An instance with unrestricted egress where the boundary of the high energy exposure is within 6 feet of a worker or any distance to a high energy source when there is restricted egress from the energy source.

4 Was a Direct Control Present? For each high energy source, a direct control is present if:

- The control is specifically targeted to the high-energy source
- The control effectively mitigates exposure to the high energy source when installed, verified, and used properly (i.e., a SIF incident cannot reasonably occur)*
- The control is effective even if there is unintentional human error during the work period (unrelated to the installation of the control)